

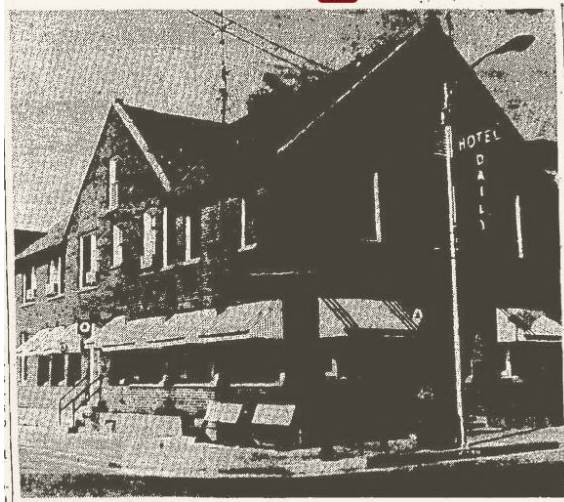
# STUART M. DAILY

Hotel Owner/Operator

Born: Nov 29, 1853 in Elkland Boro, Tioga Co., Pennsylvania

Died: Sept 7, 1932, Herington, Dickinson Co., Kansas

Stuart M Daily was born in Elkland Boro, Tioga County, Pennsylvania on November 29, 1853 to parents Stuart Daily, Sr. and his wife Betsey. In his youth (after 1860 but before 1870), the Daily family moved to a farm in Packwaukee, Marquette Co., Wisconsin. His father seems to have entered the hotel business in Wisconsin and it is assumed that Stuart learned the hotel business from his father. Stuart Daily married Ella Evangeline Slade (daughter of Luman and Rosa Slade) on October 2, 1873 in Marquette Co., Wisconsin. Around 1886, Stuart and Ella and their family along with Ella's father moved to Kansas settling near Tribune in Greeley County. He opened a hotel in the small town of Horace, KS and



operated the hotel for four years. He also appears to have owned property in La Crosse, KS. In 1890, he moved to Brookville, KS where he ran the Brookville (Union Pacific) Hotel and eating house for another five years. He then moved to the city of Soloman where he ran the city's hotel for two years. Around 1892 he moved to

Herington and operated the "Daily House" hotel until June of 1900 when he moved to McPherson to manage the Union Hotel. Daily later returned to Herington and built a hotel just opposite the Rock Island Depot. During a winter storm on November 17, 1906, while still a relatively new building, Daily's

hotel caught fire and burned to the ground. Daily then purchased or managed the “Worthington” hotel, formerly the “Avondale”, at corner of 2<sup>nd</sup> and Walnut streets. Sometime after 1920, the “Worthington”

hotel was re-named to the “Hotel Daily.” Ella Daily died in 1928 and Stuart Daily died on September 7, 1932 in Herington. Both are buried at Sunset Hill Cemetery. In 1933, the “Daily” hotel was purchased by the Miller family who continued to operate it until it was closed permanently on September 1,



1969. After standing vacant for several years, the hotel building was torn down in 1974 to make way for Catlin’s IGA store.

Stuart and Ella Daily were the parents of Frank N. Daily (May 1878 - ), Lula/Lou Daily (Oct 1880 - ), Bertha M. Daily (Jan 1883-Mar 1915), Bernice *Daily* Mueller? (Jan 22, 1883-?), Mildred H. *Daily* Dunn (Feb 1898-1945).